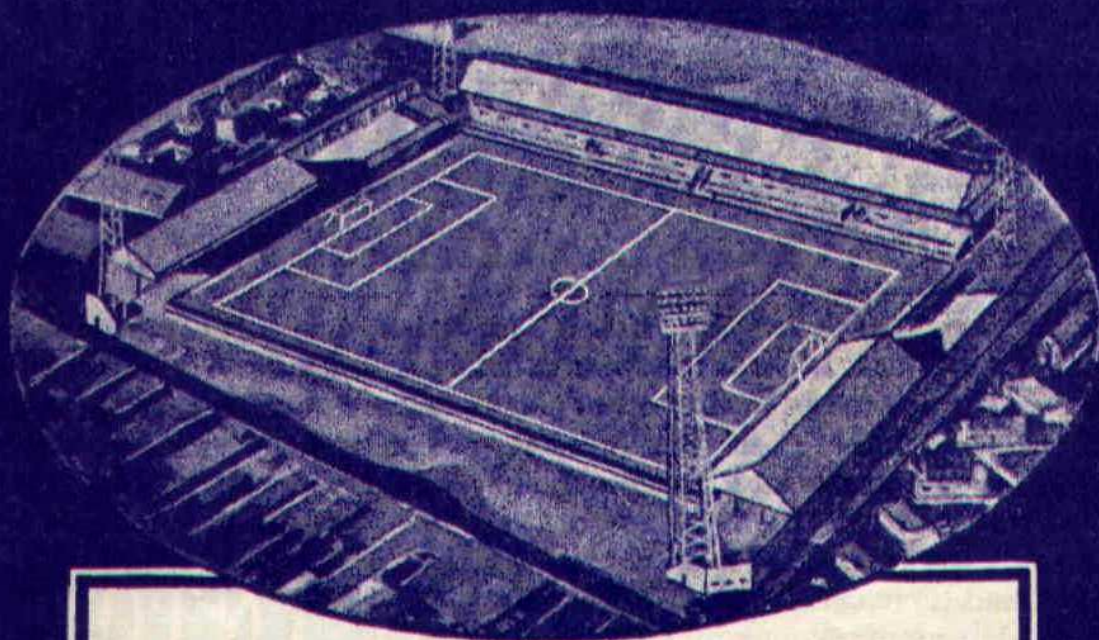




# PETERBOROUGH UNITED



Saturday, 18th November, 1961

## SWINDON

Kick-off 3 p.m.

Football  
League

Third  
Division

4d

OFFICIAL

PROGRAMME

JUST TRY TO FIND THE "ORDINARY" IN THE

# POSH



The Austin Seven isn't everyone's car. It's for those who don't mind being in the centre of things. For this car is the focus of interest for the car-curious of all ages. It's for people who enjoy showing other people under the bonnet: under the back seat: where the luggage goes. (*And how the miles go.*) People who appreciate all-round independent suspension. People who never get bored with endless questions about (a) how fast it will go, (b) how many miles to the gallon, (c) how much. (The answers are (a) over 70 mph, (b) up to 50 mpg, and (c) under £515\*.) We will gladly answer any more questions about the world's most extraordinary car.

\* £350 plus £161-13-2 P.T.



Backed by  
BMC 12-month  
warranty  
and BMC  
service

**GET INTO AN  
AUSTIN AND  
OUT OF THE  
ORDINARY!**

## MARSHALLS (CAMBRIDGE) LTD.

63 BRIDGE STREET

Tel. 66011

PETERBOROUGH

# GEORGE HOWORTH (Tyre Services) LTD.

THE TYRE PEOPLE

*Day and Night Breakdown Service*

165 CROMWELL ROAD

— PETERBOROUGH

Phone : PETERBOROUGH 4063

Night : 4064 and 5655

## CLUB CHATTER

Our first duty today is to extend the sympathy of us all to Denis Emery in his most unfortunate accident on Monday morning, at the time of writing Denis is gradually showing signs of improving and we can only hope that his injuries are not too serious and that in the not too distant future we may welcome him back at London Road. To his wife we say you also have our sympathy, our thoughts have been with you in what must be a very trying time for you; we hope Denis will soon be able to leave hospital and join you at home.

Our trip to Norwich on Monday evening was somewhat marred by the news of Denis, but thanks to the lads their efforts were at last rewarded and we were able to register a clear 3—0 victory and qualify for the long journey to Torquay on the 25th November.

It was a terrible night for football, with the cold, rain, and a troublesome wind. It was not the night for watching football yet nearly 12,000 fans turned up. It warmed the hearts of our lads to hear that famous Posh roar as they ran on to the field. Although facing the wind and rain, our lads attacked from the start, after a few near misses George Hudson netted smartly after some brilliant footwork by Roy Senior. He completed his hat-trick with two great left foot drives just before half time. Once again we had a 3—0 lead, but gallantly as Colchester tried in the second half

they were unable to save the tie. Jack Walls brought off two fine saves to keep the score sheet clear. Colchester are a very attractive football side and can be commended on their sportsmanship in all three games.

Last Saturday was almost black Saturday for us, in a hard game at Halifax we left both points behind in our very first game with this Yorkshire side.

Our display was very disappointing. In the first half we played badly and allowed a poor forward line to score two goals. In the second half we had enough chances to win the game but they were squandered by weak shooting.

The Reserves in a hard game at home finished 2—1 down against a strong West Ham Reserve team, the only point gained was that by the 'A' team in their 3—3 draw at March.

The Reserves fared better at Bedford on Wednesday with a 2—0 win in the first game in the Midland Floodlit Cup. Only some fantastic saves by Hawksworth in the home goal prevented our forwards from running up a big score. Jimmy Dunne and John Turley were in good form, whilst Norman Rigby and his defenders kept a tight hold on the dangerous Bedford forwards. Peter McNamee opened the scoring volleying from a good centre from Jimmy Sheavills. Alan Morton hit the second after a mis-kick by their centre half.

THE LEADING WHOLESALER IN SOUTH AND EAST MIDLANDS

## GOLDEN CROMPTON

ALL VEHICLE  
USERS  
SHOULD GET  
THEIR MOTORING  
GOODS  
INCLUDING

with  
F.S.C.



FROM  
THEIR LOCAL  
GARAGE

BATTERIES

# JELLINGS BUILDERS

Limited

Founded 1875

Building and Public Works Contractors

2/10 Walpole Street  
Westwood Bridge  
Peterborough

# P. S. WILLIS & SON LTD.

Electrical Engineers  
and Contractors

34 LINCOLN ROAD  
PETERBOROUGH

Tel. 2670

## SAVE WITH SECURITY

# 7%

On Deposit  
Accounts

Easy withdrawals without cost or loss  
Write or Telephone for Brochure

PETERBOROUGH & FENLAND  
FINANCE CO. LTD.,  
MIDLAND BANK CHAMBERS

Phone PETERBOROUGH 66191/2

# 8%

On Fixed  
Loans

## HALF-TIME SCORES

A—Arsenal v Nottm F  
B—Birmingham v West Ham  
C—Bolton v Aston Villa  
D—Burnley v Wolves  
E—Everton v Blackburn  
F—Fulham v Blackpool  
G—Ipswich v Man. Utd  
H—Leicester v Cardiff  
I—Man City v Chelsea  
J—Sheff Wed v Tottenham  
K—W Brom v Sheff Utd  
L—Derby v Scunthorpe  
M—Huddersfield v Liverpool

N—L. Orient v Brighton  
O—Middlesbrough v Leeds  
P—Walsall v Norw'ch  
Q—Bradford v Barnsley  
R—Brentford v Bournemouth  
S—Bristol City v Q.P.R.  
T—Grimsby v Portsmouth  
U—Newport v Hull  
V—Notts County v Lincoln  
W—Port Vale v Halifax  
X—Shrewsbury v Torquay  
Y—Southend v Northampton  
Z—Tottenham v Peterborough Res.

### TIMBER

TR ROOFING FELT

ASBESTOS

AV VENEERED PLYWOOD

IS IMPORTED HARDBOARD

IS STEEL WINDOWS

### ADHESIVES

AR REEDED HARDBOARD

AR NEW FENCING

AR OAK POSTS

AR LAMINATED PLASTICS

AR DOORS

&

In fact for all your  
building and do-it-yourself  
requirements call and see  
us at

108 BURGLEY ROAD  
or ring 5874/5

PROMPT DELIVERY SERVICE



**PETERBOROUGH UNITED FOOTBALL CLUB LTD.**

**LONDON ROAD GROUND, PETERBOROUGH**

Phone 3623

NORTHANTS

---

Full Members, The Football Association  
Associate Members, The Football League  
Members, The Football Combination; Peterborough League

**Midland League Champions**

SEASONS 1955-6, 1956-7, 1957-8, 1958-9, 1959-60

**Football League 4th Division Champions 1960-61**

**Northants Senior Cup Winners 1960-61**

---

**President**—W. HEAD, Esq.

**Chairman**—C. L. PALMER, Esq.

**Vice-Chairman**—T. H. PEAKE, Esq.

**Directors**—V. J. GRANGE, Esq., W. PECK, Esq., H. TRELFA, Esq.,  
F. TERREL, Esq., J. H. VERNUM, Esq., G. TAYLOR, Esq.

---

**Hon. Consulting Orthopaedic Surgeon**—Mr. NOEL SMITH, F.R.C.S.

**Hon. Medical Adviser**—Dr. J. W. T. SHEPHERD

**Honorary Solicitor**—R. RIGBY, M.B.E.

**Honorary Dental Surgeon**—E. C. PATTERSON, Esq.

---

**Manager**—Mr. J. HAGAN    **Secretary & Treasurer**—Mr. H. PEPPER

**Reg. Office**—LONDON ROAD GROUND, PETERBOROUGH

**Elektron**  
SERVICES LTD.

Phone  
4668

from  
**TV RENTALS 7/6** per week

"ALWAYS A SET SERVICE"

38 Cowgate 44 Westgate 577 Lincoln Rd.  
BUSH - PYE - EKCO - HOOVER

**DO YOU REQUIRE**

GREETING CARDS?  
SOCIAL STATIONERY?  
COMMERCIAL REQUIREMENTS?  
BOOKS FOR YOUNG AND OLD?  
FOUNTAIN PENS?

Visit "L. S. FIELD"

10 CHURCH ST. PETERBOROUGH Tel. 2669  
Proprietors: P. Down and M. S. McLeod

**SELF DRIVE CAR HIRE  
TAYLOR'S GARAGE**

Telephone 2968  
EASTFIELD, PETERBOROUGH  
CHEAPEST RATES IN THE DISTRICT  
NO MILEAGE CHARGE

FENGATE Phone 67048 PETERBOROUGH  
Fuel injection service—heavy breakdown and recovery  
S ales service  
GARDENER ENGINE SPARES STOCKIST  
Area Distributors  
COMMER  
ERF  
COMMERCIAL VEHICLE SPECIALISTS

**SELLERS & BATTY**  
(Sales) Ltd.  
NOW YOU'RE RIGHT  
You'll Score by Consulting

Always say

**GREETHA**

For finest Testing and  
Phone : MARKET DEEP  
or write  
SANDYLANDS, MAXEY

Referee—Mr. L. J. Tirebuck  
(Halifax)

**Peterborough**  
WALL

RIGHT

WHITTAKER

RAYNER

HOPKIN

HAILS

SMITH

BLY

**Dancing at the** ★★★  
★★★ **CORN EXCHANGE**  
EVERY SATURDAY 8-11 45 p.m.

JACKSON

SMITH

HUNT

WOODRUFF

OWEN

TROLLOPE

LEFT

Linesmen—Mr. C. A. Brownlow  
(Red Flag)  
Mr. K. E. Laflin  
(Yellow Flag)

O'HAR

Swind

**Read Derek Rowland . . .**

IN THE PETERBOROUGH STANDARD

**TROLLOPES**

(OUTFITTERS) LTD.

Ladies' Gentlemen's & Children's  
Complete Outfitters

WESTGATE - QUEEN STREET  
PETERBOROUGH

**G. L. JULYAN & SON**

Est. 1869 FOR Tel. 2397

RALEIGH - TRIUMPH & HERCULES  
CYCLES

48 COWGATE, PETERBOROUGH  
REPAIRS AND ACCESSORIES

# HAM LIME

g and Spreading Service  
 DEEPING 2355 (3 lines)  
 or write  
 MAXEY, PETERBOROUGH

FOLLOW THE STRONGEST  
 TEAM IN THE MIDLANDS  
 —captained by  
**Paul Mowforth**  
 —in the  
**Peterborough Advertiser**  
 and  
**Evening Telegraph**

**rough United** Colours—Blue Shirts  
 White Shorts

WALLS LEFT  
 R WALKER 3  
 HOPKINS RIPLEY 6  
 5 BLY HUDSON SENIOR 11  
 9 10

★  
**SHAW'S COACHES**  
**MAXEY, Near PETERBOROUGH**  
 Tel. MARKET DEEPING 2224  
**ANY DISTANCE — ANY TIME**

HUNT R. HUNT E. SUMMERBY  
 9 8 7  
 OWEN MORGAN  
 5 4  
 JONES 2 RIGHT  
 O'HARA  
**Swindon** Colours—Red Shirts, White Edgings,  
 White Shorts

## CAMPKIN'S RECORD SHOP

can supply all the latest  
 records from stock  
 Main agents for  
 H.M.V., DECCA, PHILIPS, PYE,  
 PARLOPHONE, etc.

TEL. .... 5643

TAPE RECORDERS by  
 Grundig, Philips, Ferrograph  
 and all Hi-fi apparatus  
 available on easy terms

**Long Causeway  
 PETERBOROUGH**

VISIT US AFTER THE MATCH—WE ARE  
 OPEN UNTIL 6 p.m.

### PARTIES FOR DAY OUTINGS

If there are eight or more in your party, you can save 25 per cent on your fares and we relieve organisers of all worry by making arrangements for their entire programme. Reserved accommodation without charge, free tickets to organisers according to the number of passengers. If your party runs into hundreds, ask for a special train: commission paid on full train loads for a guaranteed number of passengers

Ask your local station master for full details



**24-HOUR DRY CLEANING  
and  
3-DAY LAUNDRY SERVICE**

by the  
**BOURNE CLEANERS**

256 LINCOLN ROAD  
MILLFIELD, PETERBOROUGH

We are the "Posh" Cleaners

You too can look "POSH" if you  
get your Sports Equipment from

**WRIGHT'S SPORTS  
SHOP**

8 Priestgate — Peterborough

PHONE 5335

SUPPLIERS TO PETERBOROUGH UNITED

*For all Sports Equipment INDOOR and OUTDOOR, try—*

**THE PETERBOROUGH & DISTRICT  
CO-OPERATIVE SOCIETY LIMITED**

Sports Footwear of every kind available in the **Footwear Department**,  
including the famous "Stanley Matthews" Football Boot

Special Terms for Schools

### **Supporters Club Notes**

It was with much regret that we supporters of the United heard of the very sad accident of our Denis Emery. We shall miss Denis, he was probably playing better than at any time in his career, and we do most fervently hope that he will soon be home again. Next week in the F.A. Cup we have to make the long journey to Torquay and even though the distance will prevent quite a lot of supporters from following the team, I know that we will still have a following as British Railways will be running a train, and several people have enquired about a motor coach and if the demand warrants it we shall be able to accommodate them, but please let me know. This evening the Supporters' Club will be holding a dance at the ground, you can get your tickets from me.

TOM SHARP, Secretary.

**JOIN YOUR COUNTY REGIMENT**

**2nd EAST ANGLIAN REGIMENT**

*Apply for details to any Army Information Office or*

**GIBRALTAR BARRACKS, NORTHAMPTON**

LIKE THE POSH WE ARE SECOND TO NONE

**A. H. LEWIS (Public Works Contractors Ltd.)**

**TARMACADAM SPECIALISTS**

**CONTRACTORS TO PETERBOROUGH UTD. F.C. CLUB**

OUR SURFACING DEPARTMENT IS AT YOUR SERVICE  
FOR ESTATE ROADS, PATHS, ETC.

Phone 66047



# HAYWARD & TOWELL LTD.

TOOL SPECIALISTS

LINCOLN ROAD

Largest Selection of Tools for the Amateur and for the Craftsman

RALEIGH

**COLIN HINKINS**

LAMBRETTA

108a STAR ROAD, PETERBOROUGH

PHONE 66436

CYCLES

MOPEDS

SCOOTERS

## Club Chatter cont.

Our Reserves have much sterner opposition at White Hart Lane today, the "Spurs" having lost only one game to date. Bobby Smith, Terry Medwin and Tony Marchi are three top stars they will have to face.

Today we welcome Swindon Town at London Road and remembering their last visit when, after a drawn game at Swindon, they knocked us out of the F.A. Cup in the replay, we shall be out for revenge today. We look forward to a good game.

Swindon have many talented youngsters in their side, their right wing pair, Summerby and Hunt E., have been a magnet for several top clubs. Centre half Owen is one of the old experienced heads in the side, together with the burly Hunt R., who was obtained from Grimsby Town.

### F.A. Cup — 2nd Round at Torquay

For the above match Stand Season Ticket holders are asked to make written application for the few tickets available at 4/6 and 6/6, should the demand exceed the supply then a draw will take place on Monday. Envelopes should be marked "Torquay" and should contain Voucher "F" and s.a.e. together with P.O. or cheque, any tickets remaining unsold will be available to the general public at 8 p.m. on Monday. All Season Ticket applications must be at Secretary's Office not later than first post Monday.

### SPECIAL NOTICE

For the benefit of supporters requiring tickets, etc., or wishing to see the Secretary on any Club Business the Registered Office on the Ground will be open each Friday evening from 7-15 p.m. to 8-30 p.m. in addition to the normal daily office hours.

## THE GRANVILLE BUILDING CO. LTD.

RUSSELL STREET, PETERBOROUGH — Telephone: 67061

Builders—Contractors—Decorators—Plumbers and Hot Water Fitters—General Repairs

See our Showrooms in Russell Street for

Modern Fireplaces :: Sink Units, Bathroom Suites :: Paints and Distempers



44-46 NEW ROAD  
PETERBOROUGH

ALWAYS "AT HOME"

RADIO : TELEVISION  
DOMESTIC APPLIANCES  
SALES AND SERVICE



Visit our Showrooms or Phone 4217

1961

FIXTURES

1962

FIRST TEAM  
FOOTBALL LEAGUE  
(Third Division)

August, 1961		F. A.	
Sat. 19	Hull City	H	3-2
Tues. 22	Watford	A	3-2
Sat. 26	Port Vale	A	1-0
Mon. 28	Watford	H	4-3
September			
Sat. 2	Bristol C.	H	3-4
Thurs. 7	Notts County	A	2-2
Sat. 9	Bradford	A	2-6
Mon. 11	B'kburn R. (L. Cup)	H	1-3
Sat. 16	Grimsby	H	2-1
Wed. 20	Shrewsbury	A	4-3
Sat. 23	Coventry	A	3-1
Mon. 25	Shrewsbury	H	0-3
Sat. 30	Brentford	H	6-0
October			
Mon. 2	Newport Co.	A	3-2
Sat. 7	Bournemouth	H	1-2
Mon. 9	Newport Co.	H	2-1
Sat. 14	Crystal Palace	A	2-5
Sat. 21	Lincoln	H	5-4
Wed. 25	Norwich City (Fr.)	A	3-1
Sat. 28	Northampton	A	2-2
November			
Sat. 4	C'Ich'st'r (FA C'p)	H	3-3
Mon. 6	C'Ich'st'r (FA C'p)	A	2-2
Sat. 11	Halifax	A	1-2
Mon. 13	C'Ich'st'r (FA C'p)	N	3-0
Sat. 18	Swindon	H	
Sat. 25	F.A. Cup		
December			
Sat. 2	Portsmouth	H	
Sat. 9	Barnsley	A	
Sat. 16	Hull	A	
Sat. 23	Port Vale	H	
Boxing Day			
Tues. 26	Southend	H	
Sat. 30	Southend	A	
January, 1962			
Sat. 6	Q.P.R.	H	
Sat. 13	Bristol City	A	
Sat. 20	Bradford	H	
Sat. 27	Torquay	A	
February			
Sat. 3	Grimsby	A	
Sat. 10	Coventry	H	
Sat. 17	Brentford	A	
Sat. 24	Bournemouth	A	
March			
Sat. 3	Crystal Palace	H	
Sat. 10	Lincoln	A	
Sat. 17	Northampton	H	
Sat. 24	Q.P.R.	A	
Sat. 31	Halifax	H	
April			
Sat. 7	Swindon	A	
Sat. 14	Torquay	H	
Good Friday			
Sat. 21	Reading	A	
Sat. 21	Portsmouth	A	
E. Mn. 23	Reading	H	
Sat. 28	Barnsley	H	
Mon. 30	Notts County	H	

RESERVE TEAM  
FOOTBALL COMBINATION

August, 1961		F. A.	
Sat. 19	Leicester	A	4-1
Thurs. 24	Notts Co.	A	1-2
Sat. 26	Ipswich	H	1-1
September			
Sat. 2	Plymouth	A	3-5
Sat. 9	Arsenal	H	1-0
Sat. 23	Crystal Palace	H	3-1
October			
Sat. 7	Northampton	A	1-3
Sat. 14	Nottm. Forest	H	6-0
Sat. 21	Bristol Rovers	A	0-6
Sat. 28	Colchester	H	6-2
November			
Sat. 4	Norwich City	A	6-0
Sat. 11	West Ham	H	1-2
Sat. 18	Tottenham	A	
Sat. 25	Cardiff	H	
December			
Sat. 2	Nottm. Forest	A	
Sat. 9	Northampton	H	
Sat. 16	Leicester	H	
Sat. 23	Ipswich	A	
Boxing Day			
Tues. 26	Shrewsbury	A	
Sat. 30	Luton	H	
January, 1962			
Sat. 13	Plymouth	H	
Sat. 20	Arsenal	A	
Sat. 27	Notts Co.	H	
February			
Sat. 3	Shrewsbury	H	
Sat. 10	Crystal Palace	A	
Sat. 17	Mansfield	A	
Sat. 24	Bristol Rovers	H	
March			
Sat. 3	Colchester	A	
Sat. 10	Norwich	H	
Sat. 17	West Ham	A	
Sat. 24	Tottenham	H	
Sat. 31	Cardiff	A	
April			
Sat. 7	Luton	A	
Sat. 21	Mansfield	H	

Fixtures copyright of the Football League Ltd., and not to be reproduced in whole or in part without their consent.

DIVISION III

	P	W	D	L	F	A	Ps
Bournemouth	19	11	7	1	36	16	29
Portsmouth	18	11	5	2	34	19	27
Peterborough	19	11	2	6	49	45	24
Q.P.R.	18	9	5	4	47	30	23
Reading	19	11	1	7	36	33	23
Crystal Palace	20	8	6	6	43	31	22
Watford	20	8	6	6	34	35	22
Northampton	20	8	5	7	40	26	21
Bristol City	20	9	3	8	33	30	21
Port Vale	20	8	5	7	29	27	21
Shrewsbury	20	7	6	7	37	36	20
Grimsby	19	8	4	7	29	32	20
Bradford	19	9	1	9	37	34	19
Coventry	19	6	7	6	28	30	19
Halifax	17	7	4	6	27	29	18
Barnsley	19	7	4	8	40	43	18
Hull	17	6	5	6	24	20	17
Notts Co.	18	6	4	8	35	34	16
Southend	20	5	6	9	25	30	16
Swindon	20	5	6	9	39	40	16
Lincoln	18	5	5	8	28	38	15
Torquay	18	4	2	12	32	45	10
Brentford	19	4	2	13	17	41	10
Newport	20	3	3	14	23	49	9

	Lge	Cup	F.Com.	F'd's	Ttl
Bly	12	2		2	16
McNamee	3	1	1		5
Emery	14	1			15
Smith	5		3		8
Ripley	2				2
Hails	4	1			5
Own Goals	2				2
Senior	2		4		6
Turley			12		12
Sheavills			7		7
Tait			2		2
Dunne			4		4
Hudson	5	4		1	10
<b>Total</b>	<b>49</b>	<b>9</b>	<b>33</b>	<b>3</b>	<b>94</b>

## 'POSH' SUPPORTERS

FOLLOW YOUR TEAM TO ALL AWAY MATCHES  
RIDE WITH

# RIMES

MOTOR SERVICES LIMITED

*(The Largest Fleet in the Area)*

50 Latest Model Cars from as low as

## 15/- PER DAY

Plus 2d. per Mile

## NEWARK AVENUE GARAGE

GARTON END

Phone 2053

PETERBOROUGH

## TREADPLATES LTD.

24-hour Tyre and Battery Service  
Phone—Peterborough 67112/3/4

New Tyres — Remoulds — Repairs

ALWAYS AT YOUR SERVICE

Main Agents for the

GOLDEN CROMPTON FSC BATTERY

45 Oundle Road,  
PETERBOROUGH

? WHAT CAN THE T.A. DO FOR YOU? ?



ASK

4/5th BN THE NORTHAMPTONSHIRE REGIMENT

London Road, Tel. 4581

Lincoln Road, Tel. 4688

PETERBOROUGH

## PIONEER CARAVANS

Main Distributors for

ECCLES, FAIRVIEW, WILLERBY and  
NORMANDIE

A SITE FOR EVERY SALE

SHOWROOMS:

45 QUEEN STREET, PETERBOROUGH  
Phones: 4975/4539

Also at Eye Phone 244/263  
Always a Good Selection of Secondhand  
Caravans in Stock

## LEARN TO DRIVE

LET US PREPARE AND GET YOU  
THROUGH THAT DRIVING TEST

R.A.C. Registered Instructors

**MODERATE CHARGES**

## John's School of Motoring

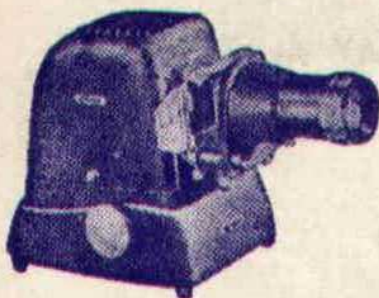
(R.A.C. and M.S.A. Registered)

45 QUEEN STREET

Tel. 4975

PETERBOROUGH

# CAMPKINS for PROJECTORS



ALDIS 500 for use at Clubs, etc.  
£22-2-6

16 mm. SOUND  
FILM UNIT

Available for Children's Parties and  
Film Shows for Old People's Homes,  
Institutes, etc., etc.

LEITZ PRADOVIT  
AUTOMATIC  
£67-9-0

ALDIS XT150  
Magazine Type  
£17-19-6

KODASLIDE  
150 watt  
£8-10-0

NORIS AIRFLOW  
300 watt  
£21

PAXIMAT. S.  
Remote Control  
£37-15-0

ZEISS IKOMAT  
AUTOMATIC  
£63-5-0

Hire Purchase — Part Exchanges — Camera Repairs

TELEPHONE  
5643

## CAMPKIN'S CAMERA SHOP

LONG CAUSEWAY — PETERBOROUGH

(Also at Cambridge — 15 King's Parade)

TELEPHONE  
5643

Saturday, 25th November, 1961

Football Combination—Saturday Section

## CARDIFF CITY RESERVES

Kick-off 3 p.m.

## STEEL FROM STOCK

- ★ SECTIONS
- ★ SHEETS
- ★ PLATES
- ★ BARS
- ★ BRIGHT & BLACK
- ★ GALVANISED
- ★ TUBES & RECTANGULAR  
HOLLOW SECTIONS
- ★ NUTS & BOLTS
- ★ WELDING RODS
- ★ ENGINEERS TOOLS, Etc.
- ★ STEEL FABRICATIONS

### Ouse Steel & Metals Limited

9 WEST END, WHITTLESEY, Nr. PETERBOROUGH

Telephone: Whittlesey 2371/2 - 3197 - 2145